

EFL2503-HV

High Capacity Electric Counterbalanced Forklift 25T



Manufacturer			EP
Model designation			EFL2503-HV-12
Drive			Electric
Load capacity	Q	kg	25000
Load center distance	c	mm	1200
Service weight		kg	38700
Height, mast extended	h1	mm	5890
Length to face of forks	h3	mm	6420
Overall width	h4	mm	3080/3000
Fork dimensions	l2	mm	120/300/2440
Turning radius	b1/b2	mm	6350
Travel speed, laden/unladen	s/e/l	km/ h	22/22
Lifting speed, laden/unladen	Wa	m/s	0.3/0.35
Lowering speed, laden/unladen		m/s	0.48/0.4
Max. gradeability, laden/unladen		%	20/30
Drive motor rating S2 60 min		kW	135
Battery voltage/nominal capacity		V/Ah	614.4/460

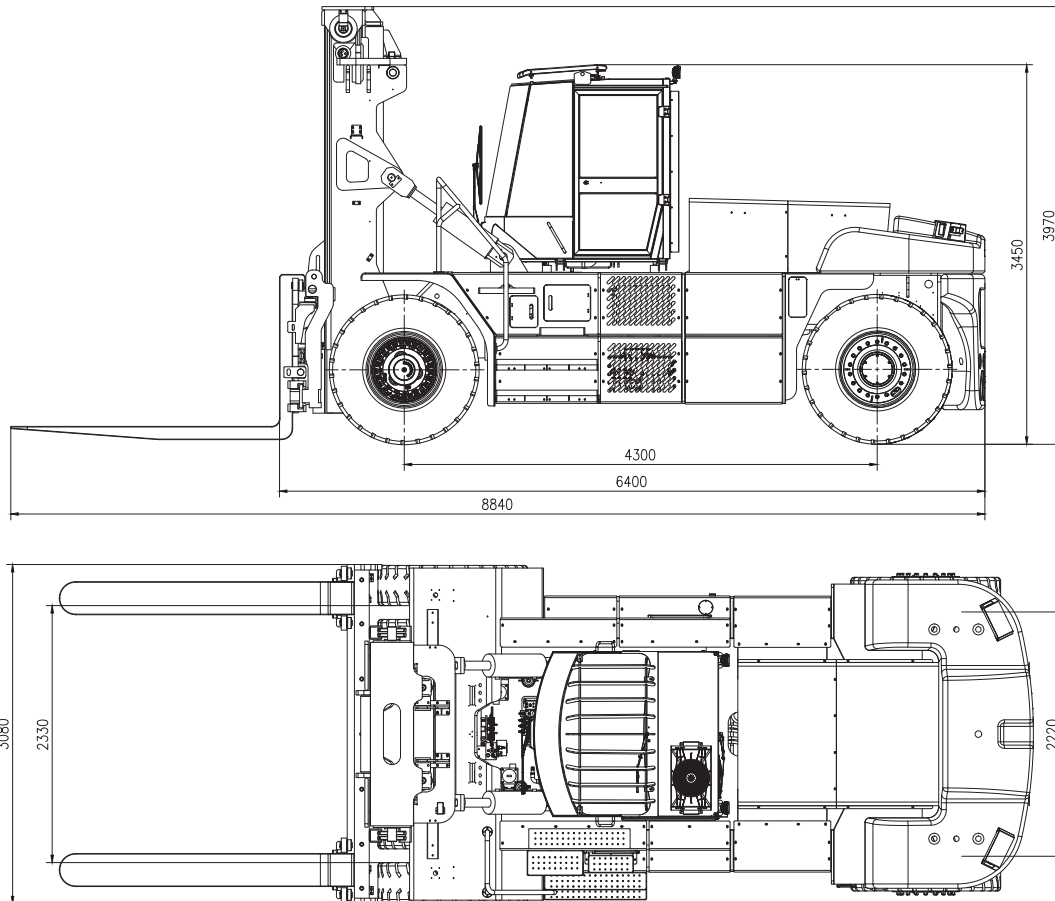
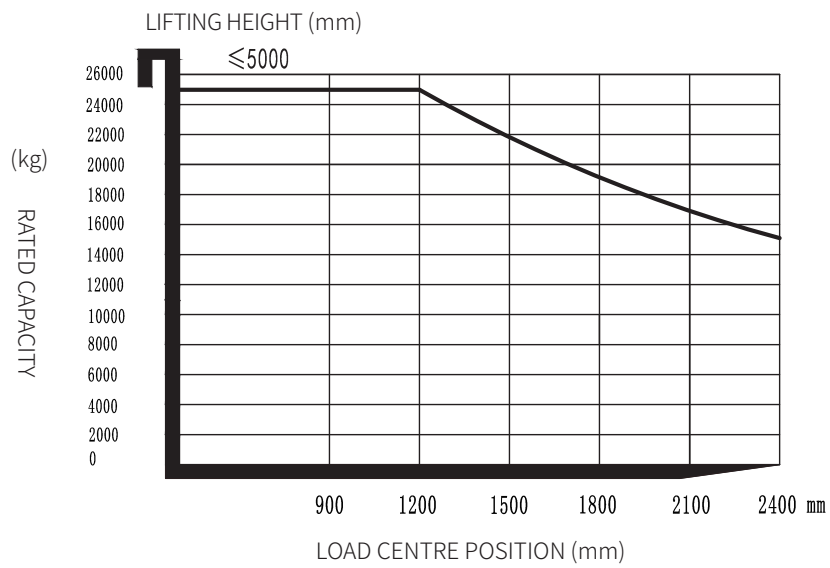
Li-ion High Capacity Truck 25T

EFL2503-HV

Distinguishing mark	1.1	Manufacturer			EP
	1.2	Model designation			EFL2503-HV-12
	1.3	Drive			Electric
	1.4	Operator type			Seated
	1.5	Load capacity	Q	kg	25000
	1.6	Load center distance	c	mm	1200
	1.8	Load distance, centre of drive axle to fork	x	mm	1130
	1.9	Wheelbase	y	mm	4300
	Service weight	2.1	Service weight		kg
2.2		Axle loading, laden front/rear		kg	57800/5900
2.3		Axle loading, unladen front/rear		kg	18900/19800
Tyres/chassis	3.1	Tyre type			pneumatic
	3.2	Tyre size, front			14.00-24-28PR
	3.3	Tyre size, rear			14.00-24-28PR
	3.5	Wheels, number front/rear (x=drive wheels)		mm	4/2
	3.6	Tread width, front	b10	mm	2200
	3.7	Tread width, rear	b11	mm	2460
	4.1	Tilt of mast/fork carriage forward/backward	α/β	°	6/10
Dimensions	4.2	Retracted mast height	h1	mm	3950
	4.3	Free lift	h2	mm	125
	4.4	Lift height	h3	mm	4000
	4.5	Height, mast extended	h4	mm	5890
	4.7	Height of overhead guard (cabin)	h6	mm	3380
	4.8	Seat height/standing height	h7	mm	2465
	4.12	Tow coupling height	h10	mm	390
	4.19	Overall length	l1	mm	8860
	4.20	Length to face of forks	l2	mm	6420
	4.21	Overall width	b1/b2	mm	3080/3000
	4.22	Fork dimensions	s/e/l	mm	120/300/2440
	4.24	Fork carriage width	b3	mm	3080
	4.31	Ground clearance, laden, below mast	m1	mm	185
	4.32	Ground clearance, center of wheelbase	m2	mm	320
	4.34.1	Aisle width for pallets 1000×1200 crossways	Ast	mm	10120
	4.34.2	Aisle width for pallets 800×1200 lengthways	Ast	mm	10120
	4.35	Turning radius	Wa	mm	6350
Performance data	5.1	Travel speed, laden/unladen		km/ h	22/22
	5.2	Lifting speed, laden/unladen		m/s	0.3/0.35
	5.3	Lowering speed, laden/unladen		m/s	0.48/0.4
	5.5	Drawbar pull, laden/unladen		N	140000/140000
	5.6	Max. drawbar pull, laden/unladen		N	160000/160000
	5.8	Max. gradeability, laden/unladen		%	20/30
	5.10	Service brake			hydraulic
	5.11	Parking brake			hydraulic
Electric-engine	6.1	Drive motor rating S2 60 min		kW	135
	6.2	Lift motor rating at S3 15%		kW	90
	6.4	Battery voltage/nominal capacity		V/Ah	614.4/460
	6.5	Battery weight		kg	1864
	6.6	Cyclic energy consumption according to DIN EN 16796		kWh/h	26
	6.7	Operating output according to VDI 2198		t/h	/
	6.8	Energy loss of operating output according to VDI 2198		kWh in 1 h(kWh/h)	/
	6.9	Charger output current		A	115
	Addition data	8.1	Type of drive control		
10.5		Steering design			hydraulic
10.7		Sound pressure level at the driver's ear		dB(A)	<75

If there are improvements of technical parameters or configurations, no further notice will be given.
The diagram shown may contain non-standard configurations.

RATED CAPACITIES AND LOAD CENTERS GRAPH



Mast Option

Mast types	Lift height (h3) mm	Height, Mast			Height, Free lift(h2)	
		Height, mast lowered(h1) mm	Height, mast extended(h4)		No backrest mm	With backrest mm
			No backrest mm	With backrest mm		
2-Standard Mast	4000	3950	5890	5890	125	125

Option

No.	Optional items	EFL2503-HV
1.1	Fork dimension	●12500*1200、5A、250*110*2440○12500*1200、5A、300*120*2440
1.3	Fork lowered height	●125
1.4	Fork carriage width	●3080
2.1	Load wheel type	●Double
2.2	Load wheel material	●Rubber
2.3	Drive wheel material	●Rubber
2.4	Front wheel type	●Double
2.5	Front wheel material	●Pneumatic○solid
2.6	Rear wheel material	●Pneumatic○solid
2.7	Battery capacity	●614.4V/460Ah
2.8	Charger	○200V-750V/60KW External (national standard) ○300V-1000V/80KW External (national standard) ○200V-750V/20KW External (European standard)
2.9	Battery indicator	●With time
2.10	Seat type	●Suspension + safety belt logic switch
2.11	Attachments	●Adjustable fork
2.12	Safe hook	●No
2.13	Traction pin	●Yes and not customized
2.14	Electrostatic chain	●No
2.16	handle head type	●One-handed big handle head
3.1	Foldable fork	●No
3.3	Castor wheels	●No
3.4	Water auto-filling system	●No
3.5	Front lamp	●LED
3.6	Rear lamp	●LED
3.7	Warning lamp	●Yes and not customized
3.8	Steering lamp	●LED
3.9	Blue lamp	●Yes and not customized
3.10	Area warning lamp	●Yes and not customized
3.11	Rearview mirror	●Yes and not customized
3.12	Hummer	●Yes and not customized
3.13	Height display	●No
3.14	Camera	●Yes and not customized
3.15	Fire extinguisher	●Yes and not customized
3.16	Vertical handler working	●No
3.17	OPS system	●Yes and not customized
3.18	Guide wheel	●No
3.19	USB interface	●Yes and not customized
3.20	Step on the safety switch with both feet	●Yes and not customized
3.21	Electronic sale	●No
3.22	Electronic sale with print	●No
3.23	Remote monitoring	●No○Yes and not customized
3.24	Side supports	●No
3.25	Fan heater	●No
3.26	The British standard cannot walk when charged	●Yes and not customized
4.1	Battery side pull function	●No
4.2	Cold storage	●No
4.3	Cabin	Fully enclosed cabin;front, rear and top wipers; With electric fan;Heating and cooling air conditioning system;
4.4	Weighting system with fork	●No○Yes and not customized
4.5	Proportional lift system	●Yes and not customized
4.6	Forks tilt forward and backward	●Yes and not customized
4.7	Overhead guard	●Yes and not customized
4.8	Drive assembly	●Yes and not customized
5.1	Battery side pull attachment	●No

Note: ●Standard ○ Optional - Inconformity